

DIAGNOSTICS

# ● jaltest MHE

CATALOG



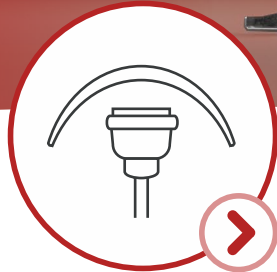
# ● jaltest MHE



JALTEST MHE



SOFTWARE



COVERAGE



HARDWARE



SERVICES



COJALI

JALTEST. INDUSTRY-LEADING DIAGNOSTICS & TECHNICAL SOLUTIONS





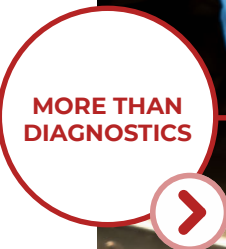
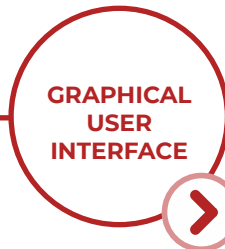
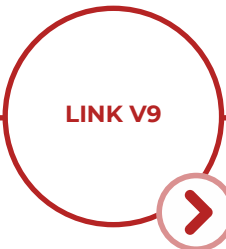
## JALTEST MHE

Jaltest MHE is a All-Makes and All-Systems diagnostics tool developed to perform the most advanced diagnostics and maintenance tasks on material handling equipment and lifting platforms, in an easy and intuitive way.

Jaltest is not limited to reading fault codes on vehicle systems, it also features bi-directional controls and guided troubleshooting.

Jaltest Customer Support is focused to deliver professional services to the workshop through:

1. Technical Assistance.
2. Training & e-Learning.
3. Specialized Customer Support.





## LINK V9



LIGHTER,  
FASTER,  
BETTER

### **FASTER CONNECTION RATE (BAUD RATE).**

Improved performance and communication with a speed increase in the data transfer and processing, both in VCI-PC and VCI-system.

### **USB AND SUB26 CONNECTOR PROTECTION (POKA YOKE MODEL).**

Protection and integrity of the connectors that have a mistake-proofing design.

### **ROBUST ELECTRONICS AND ENHANCED COMMUNICATION CAPABILITIES.**

Greater connectivity, new supported communication protocols and extended multiplexor.

### **IMPACT ABSORPTION.**

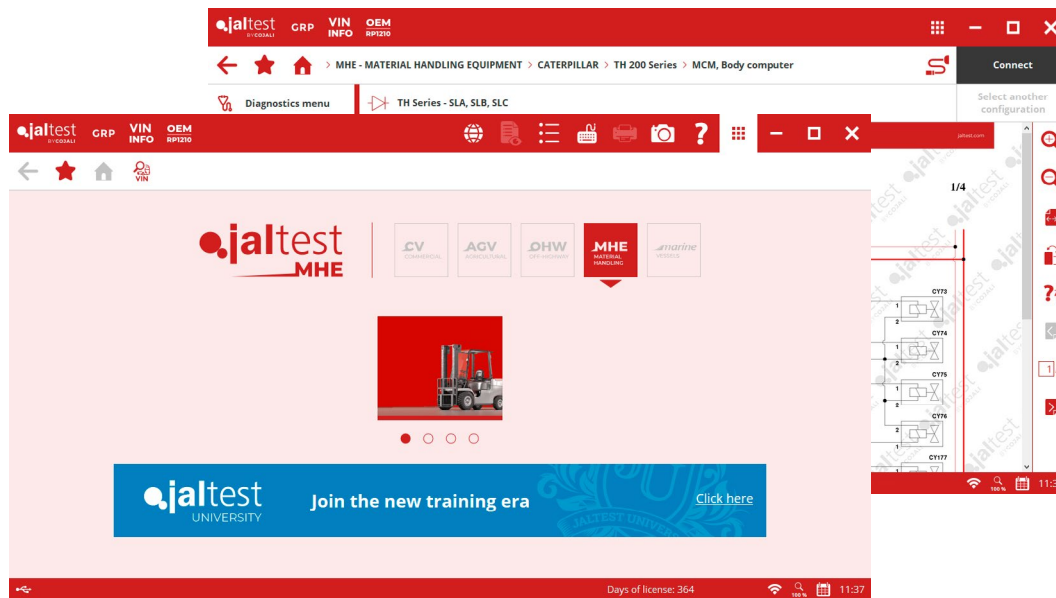
Design with a rugged covering that cushions small bumps, protects against scratches and enables the seal closure of the device, preventing the inlet of dirt and water (IP40).

### **COMPACT AND LIGHT.**

Reduced weight, Jaltest V9 is 76% lighter than its predecessor. It offers the possibility of attaching a lanyard to facilitate the use of the device.



## GRAPHICAL USER INTERFACE



MORE VISUAL,  
MORE INTUITIVE

### FAST INSTALLATION AND HANDLING.

Optimized software to reduce the installation and update time, as well as a shorter response.

### CUSTOMIZABLE.

Responsive design that adapts to all screen types and sizes. It enables the user to configure the shortcuts, customize the working area and define the visualization according to the user needs.

### EVERYTHING IN ONE SINGLE DISPLAY.

It offers the user all the information they needed one single display. It enables them to visualize the maximum number of functions, make a search, etc.

### ELEGANT DESIGN WITH BRIGHTER COLORS.

Clean, minimalist, and elegant design to favor the visualization of graphics, icons and colors.





## ALL-BRAND AND ALL-SYSTEM COVERAGE

Jaltest MHE is the first industry product focused on running diagnostics on material handling equipment. All these smaller machines that were left aside can now be diagnosed, measured, and calibrated.

Following the functionalities of the rest of Jaltest modules, this version is completed with a great coverage of brands, systems and technical information, as well as a wide range of cables to make a direct connection.

COVERAGE // UP TO 43 BRANDS		
BOBCAT	CATERPILLAR	GENIE
HAULOTTE	JCB	JLG
JUNGHEINRICH	LINDE	MANITOU
SKYJACK	STIHL	TOYOTA



Jaltest MHE diagnostics coverage fills the gap in the industry, providing a manageable solution with the most extensive and detailed coverage. New functionalities, brands, and modules are included in updates scheduled every 4 months using flexible and market-oriented focus.

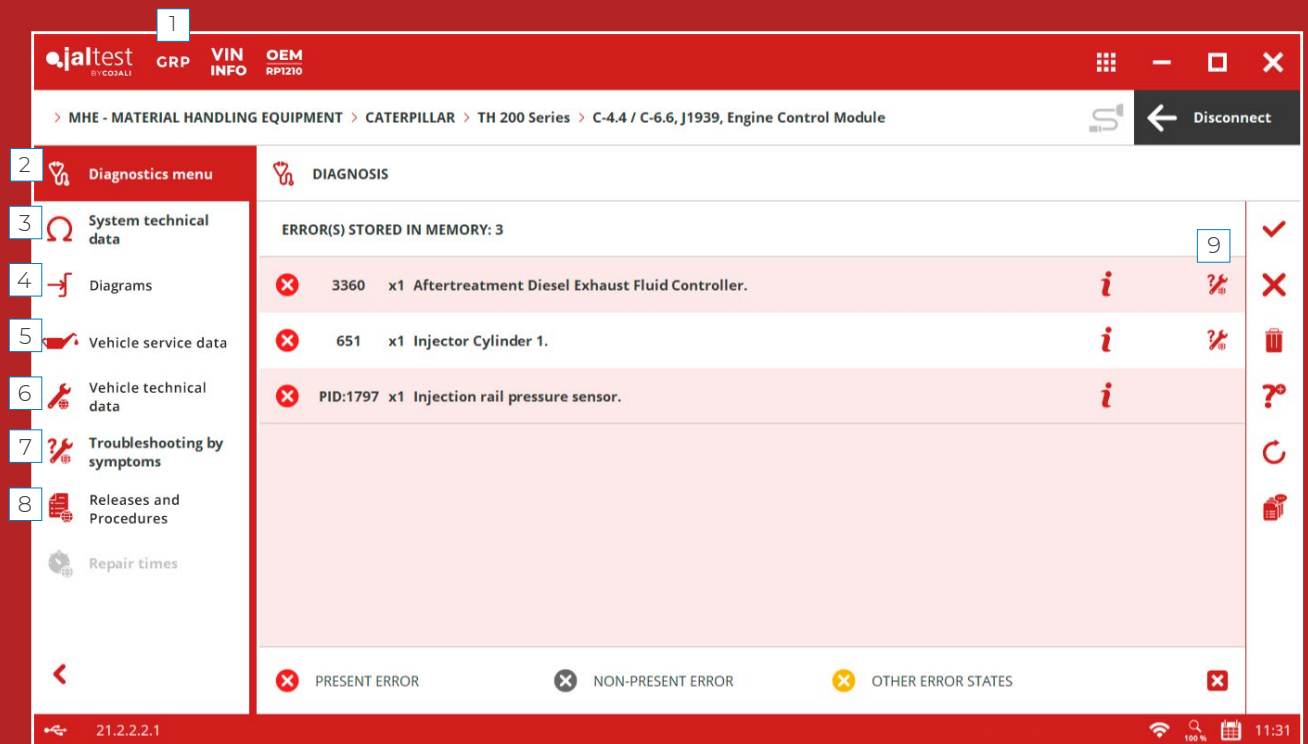


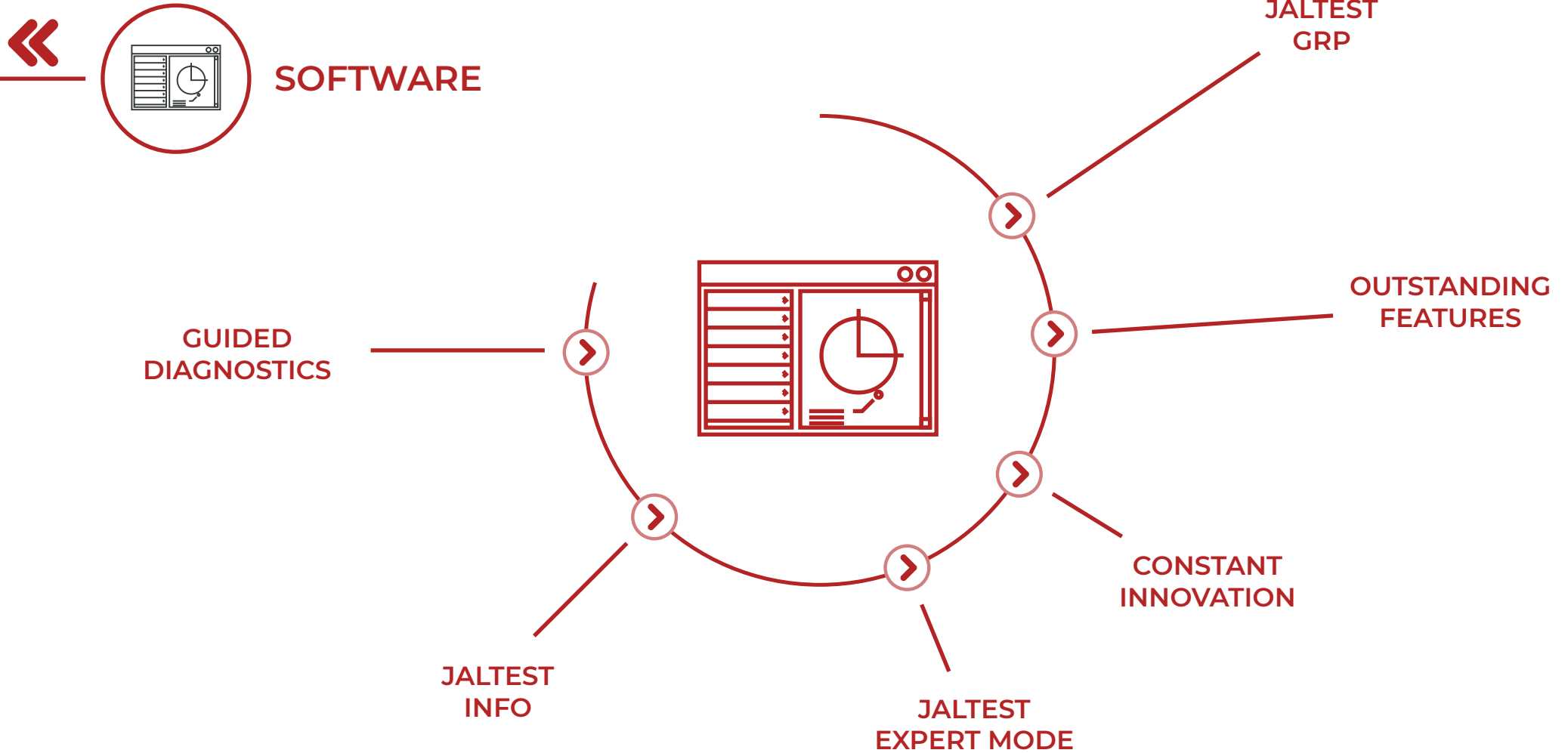
## MORE THAN DIAGNOSTICS

These are some of the features that make Jaltest the Industry's Leading Diagnostics tool:

1. GRP (Garage Resource Planning). Workshop and Customer/Vehicle Record Management.
2. Diagnostics Menu.
3. System Technical Data.
4. Wiring diagrams, and fuses and relay boxes.
5. Vehicle Service Data.
6. Vehicle Technical Information.
7. Troubleshooting Guides by Symptoms.
8. Technical Releases.
9. Troubleshooting Guides by Fault Codes.

With Jaltest, technicians will have access to a wide range of functionalities which will guide them through the machine repair process:









## GUIDED DIAGNOSTICS

Jaltest MHE provides the necessary information to repair breakdowns of forklifts, telehandlers and lifting platforms in an easy and effective way.

1. Component technical data.
2. Wiring, system and fuse diagrams.
3. Machine service data for equipment inspections.
4. Equipment technical data.
5. Troubleshooting by symptoms of the most common faults on the machinery.
6. Releases and procedures with manufacturer information.

**JALTEST GUIDES YOU  
WITH ADDITIONAL  
INFORMATION TO  
ASSIST IN THE REPAIR  
PROCESS**



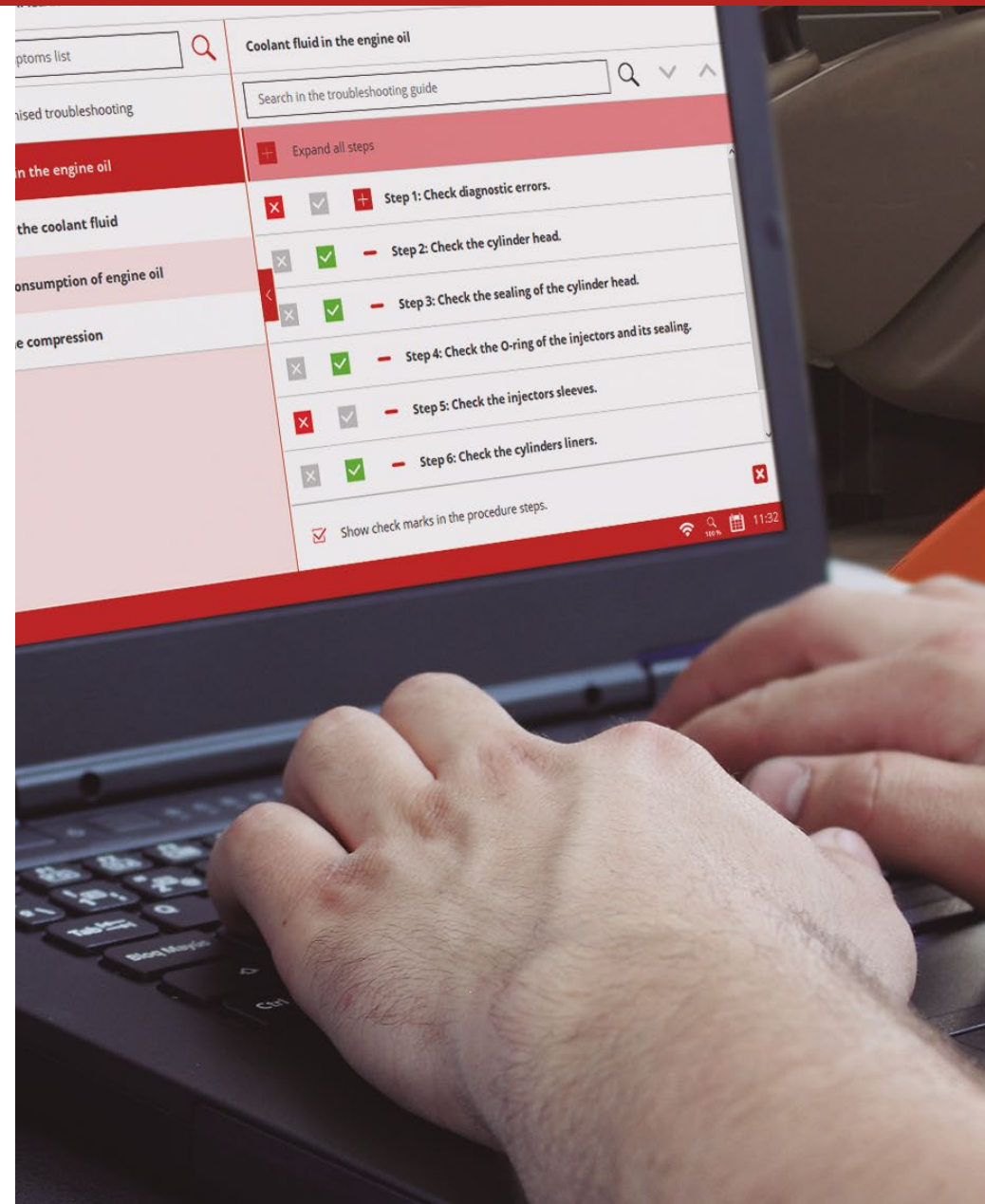


## JALTEST INFO

Detailed technical information including images, pictograms, graphics, diagrams, and pictures for every vehicle to be diagnosed. This information will help to identify the fault code, the part, the location, etc. In this complete module we can find:

1. Diagnostics (Troubleshooting By Fault Code).
2. System Technical Data.
3. Diagrams.
4. Vehicle Technical Data.
5. Vehicle Service Data.
6. Troubleshooting by Symptoms (diagnostics).
7. Releases and Procedures.
8. Manual Diagnostics.

**JALTEST INFO PROVIDES DETAILED  
TECHNICAL INFORMATION FOR  
THE REPAIR PROCESS**



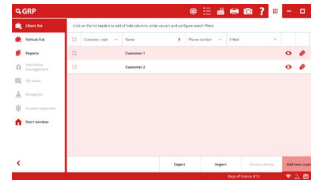


## JALTEST GRP

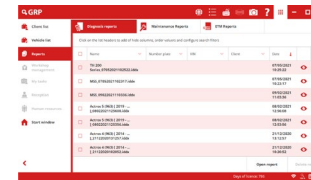
GRP is an optimized workshop management solution. Share customer information, vehicle data, and diagnostics reports, work order management, repair times.

### GRP BASIC.

- Client list.
- Vehicle list.
- Reports (diagnostics & maintenance).



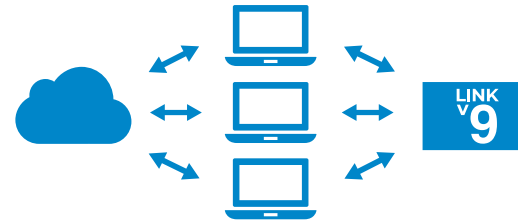
CLIENT LIST.



REPORTS.

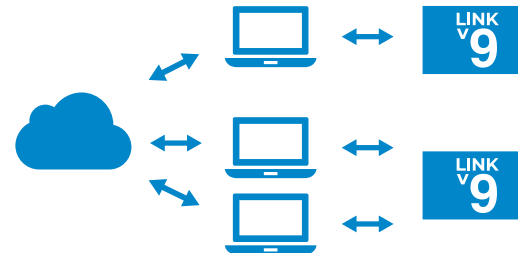
### GRP SYNCHRO.

- GRP Basic.
- User accounts control (10 maximum).
- Data synchronisation between multiple PCs (same Jaltest interface).
- Information Back-up.
- Human Resources.



### GRP ENTERPRISE.

- GRP Synchro.
- Workshop Management Module.
- Reception Module.
- My Tasks Module.
- Data synchronisation between PCs (same company).
- Work order reports.
- User accounts control (unlimited).



### GRP NETWORK.

- Access to diagnostics and maintenance reports between multiple workshops inside a network.



## GRP MODULES DESCRIPTION:

### CLIENT LIST.

Management of customers for a workshop or a network of workshops.

### VEHICLE LIST.

Management of vehicles for a workshop or a network of workshops.

### REPORTS.

Management and consultation of all reports generated by Jaltest: diagnostics, maintenance, work order, repair times.

### WORKSHOP MANAGEMENT.

- Work orders.
- Task.
- Workshop time reports.

### MY TASK.

Each user can manage the assigned tasks easily by this menu.

### RECEPTION.

- Reception forms.
- Work orders management.

### HUMAN RESOURCES.

Intended for the management of the workshop's staff.



## OUTSTANDING FEATURES

### 1. INTERACTIVE WIRING DIAGRAMS.

While navigating over the wiring diagrams, the components are outlined and the technical information including, relevant documents, technical data, comments and location, can be directly accessed.

### 2. SYSTEM OPERATING DIAGRAM.

Understanding how systems work can be a complex task. Jaltest provides the pneumatic, electrical and fuel schematics with their corresponding technical values, images, locations and much more to speed up the technician's work.

### 3. SYSTEM DISPLAY.

Real-time live data display on vehicle schematics. It enables a fast assessment of the functioning of the system.

### 4. VIRTUAL INSTRUMENTS / GRAPHS.

Visual aid for the technician to check values and understand the actual status of any system available in the machine.



### 5. SYSTEM SCAN.

This function allows the user to auto-detect the available systems in the selected model. During the Auto-detection, fault code reading of every available system takes place including their identification data. Later, every fault found can be cleaned.

### 6. FLEET CUSTOMIZATION.

This function will allow customizing your fleet. Create new brands specific to your market by selecting the systems included in the machine. Add connectors, location, images and comments.

### 7. DIAGNOSTICS BY NUMBER PLATE.

Once the customers and vehicles portfolio has been created, the access by number plate is fast and easy.

### 8. SHORTCUT TO SPECIAL FUNCTIONS.

Optimize repair times at the shop with direct access to relevant repair processes.

### 9. TECHNICAL DATA AND PROCEDURES.

The experience of Cojali's Technical Assistance team has allowed the classification of the most relevant technical data of the machine.





## JALTEST EXPERT MODE

Jaltest EXPERT MODE offers advanced diagnostics possibilities for the workshop. With EXPERT MODE, the technician is able to carry out actions that require modifying parameters on different ECUs:

1. Mast tilt angle sensor calibration.
2. Joystick calibrations.
3. Particulate filter regeneration.
4. Load cell sensor calibration.
5. Transmission calibrations.
6. Maintenance reset.
7. More...





## CONSTANT INNOVATION

New machinery, models and systems are being developed constantly. This is why Jaltest MHE releases three software updates each year, offering your business industry-leading diagnostics solutions.

MAKES

**43**

MODELS

**695**

SYSTEMS

**2728**

TECHNICAL INFO

**1372**

DIAGRAMS

**919**

---

# THREE ANNUAL SOFTWARE UPDATES

---





**COVERAGE**

## MATERIAL HANDLING EQUIPMENT

This Jaltest kit has been developed to perform diagnostics on material handling equipment and lifting platforms as well as forklifts, electric pallet trucks, scissor lifts or telehandlers.

With extensive coverage, detailed technical information and step-by-step repair guides, Jaltest MHE is one stop solution for each and every workshop.

JALTEST KITS



THIS COMPREHENSIVE COVERAGE MAKES THIS KIT THE MOST POWERFUL DIAGNOSTICS UNIT ON THE MARKET

1. COVERAGE FOR INTERNAL COMBUSTION FORKLIFT, SCISSOR LIFT, TELEHANDLER AND MORE.
2. ALL COMMUNICATION PROTOCOLS ARE SUPPORTED.
3. INTUITIVE AND QUICK SOFTWARE INTERFACE.
4. AUTOMATIC DETECTION OF SYSTEMS AND FAULT CODES.
5. TROUBLESHOOTING BY SYMPTOMS AND FAULTS HELP.
6. INTEGRATED TECHNICAL INFORMATION, WIRING DIAGRAMS, TECHNICAL DOCUMENTS...
7. SCHEDULED UPDATES AND LATEST DEVELOPMENT IMPLEMENTATIONS.
8. CALL-CENTER FOR TECHNICAL AND PRODUCT SUPPORT.
9. TRAINING & E-LEARNING.
10. GRP - GARAGE RESOURCE PLANNING.
11. MACHINE BRAND CUSTOMIZATION.

JALTEST KITS ARE CLASSIFIED BY SECTOR AND COVERAGE





## JALTEST KITS

Much more than just a all-makes diagnostics tool. Jaltest Diagnostics includes many functionalities that will help you during the vehicle maintenance and repair process, facilitating and speeding up your work at the workshop.

Our combined kits of hardware and software make it possible to cover with a single device any make or model of commercial vehicle, agricultural equipment, special equipment, material handling equipment or vessels.

Find out the features that make Jaltest Diagnostics the most valued tool in the sector.

**CV**  
COMMERCIAL



**AGV**  
AGRICULTURAL



**OHW**  
OFF-HIGHWAY



**MHE**  
MATERIAL  
HANDLING



**marine**  
VESSELS







## HARDWARE

All Jaltest products have been designed to meet the demands and needs of the workshop mechanics and the most demanding road assistance needs. They are designed and built to face any extreme work or weather conditions.

### JALTEST RUGGED PC.

- Windows 10 Pro.
- Exclusive design that improves resistance.
- IPX3, IP5x category certification.
- Liquidresistant keyboard/touchpad.



### JALTEST RUGGED PAD.

- 10" Rugged Tablet with Windows 10 Pro.
- Daylight-readable Display with Gloved Multi Touch + waterproof digitizer pen.
- User-replaceable Battery and Optional Long-Life Battery.



Accessories included.  
Hand Strap.  
Corner Guards.

### JALTEST HARDWARE SOLUTIONS.

The tool's heartbeat, programmed to convey information with all communication protocols in a quick and efficient way.

#### LINK V9



#### CABLES



### JALTEST ACCESSORIES.

Additional equipment offered to the workshop in order to perform their daily tasks in an easier and more comfortable way.

#### WORKSTATION



#### HARDCASE



Dimensions:  
680 x 480 x 180 mm (26.77" x 18.90" x 7.09").











## SERVICES

## JALTEST UNIVERSITY

Jaltest University gathers all the training offer of Jaltest, from courses traditionally taught on-site to e-learning courses or webinars. Thus, we have adapted to the new needs for universal and quality training at the disposal of any professional in the sector.

1. E-Learning courses.
2. Webinars.
3. On-site courses.
4. Courses for distributors.

## COURSES

- |  |   |
|--|---|
|  <b>DIAGNOSTICS</b>       |  <b>BRANDS</b>               |
|  <b>ELECTRICITY</b>       |  <b>TRAILER</b>              |
|  <b>PNEUMATICS</b>        |  <b>AGRICULTURAL VEHICLE</b> |
|  <b>ENGINE MANAGEMENT</b> |  <b>JALTEST SPECIALIST</b>   |
|  <b>GEARBOX</b>           |  <b>LCV</b>                  |
|  <b>COMFORT SYSTEMS</b>   |  <b>OTHERS</b>               |



## TECHNICAL ASSISTANCE

This kind of support is essential to solve certain vehicle breakdowns. Technological developments require the technician to update their knowledge regularly. Cojali offers a specialised support based on the experience of our top mechanics and the development of technical information for material handling equipment.

Jaltest customers worldwide continue to trust with our specialised technical assistance service; this service includes the possibility of remote assistance connections to solve our customers' doubts, immediately.

THE CHANCE TO TURN  
YOUR WORKSHOP INTO  
A TECHNOLOGICAL CENTRE  
IS IN YOUR HANDS

## CUSTOMER SERVICE

A human team will be at your service to offer all the information about Jaltest you may need.

1. Software Update and Innovations.
2. Update release calendar information.
3. Device license management.
4. New products, hardware and software.
5. Special offers and promotions.
6. Invoices and purchase orders.
7. Shipping management.

« **cojali**

- cojali** >
- jaltest TOOLS** >
- jaltest ISOBUS CONTROL** >
- jaltest TELEMATICS** >
- OEM. SOLUTIONS by cojali** >

**COJALI.**  
**WE MEET ALL YOUR BUSINESS NEEDS** >



Cojali is a Spanish multinational company and a leading manufacturer of cooling systems, braking systems, electronic components, all-makes diagnostics and telematics for commercial vehicles, agricultural equipment, construction machinery, material handling equipment and vessels.

Established in 1991, Cojali focuses on research, development and innovation for commercial vehicles in the aftermarket, offering high quality products just as the OEM.

# « jaltest cojali



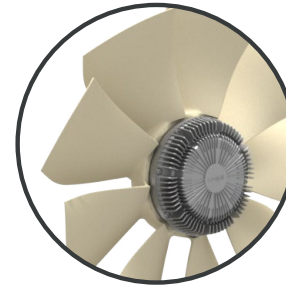
## SUSPENSION AND BRAKE SYSTEMS

In Cojali we give priority to driving safety and resource optimisation. We develop and manufacture the best brake and suspension systems compatible with the main brands of truck, bus and trailer.



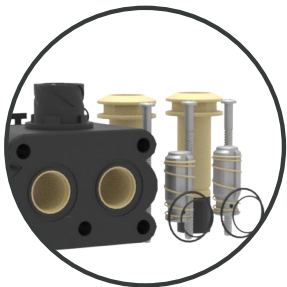
## ELECTRONIC AND ELECTRIC COMPONENTS

They are in charge of highly important functions such as the measurement of the exhaust gases, the climate control of the cab or the reduction of fuel consumption. Therefore, they have become essential in order to meet the current needs of the sector.



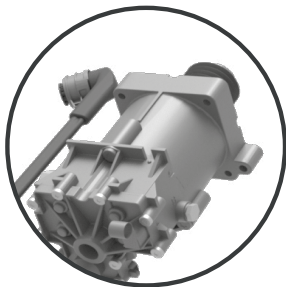
## COOLING SYSTEMS

Our cooling systems, adaptable to the main brands of truck, bus, light vehicle, passenger car, agricultural equipment and construction machinery, are manufactured under the most demanding quality standards.



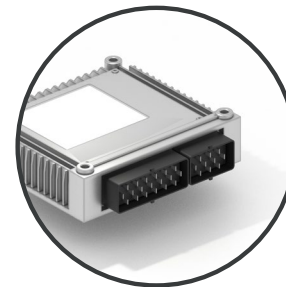
## REPAIR KITS

Repairing a component in the workshop can save time. Therefore, in Cojali we have drawn on all our expertise as manufacturers for the development of the repair kit range in order to make these kits available for our customers.



## HYDRAULIC SYSTEMS AND TRANSMISSION

We offer a wide catalogue of components for the transmission systems of the main brands of truck and bus. Our clutch servos use the most modern techniques in hydraulic or pneumatic transmission.



## REMAN

We invest our efforts in repairing and prolonging the useful life of electronic control components. Our catalogue of reconditioned products includes brake callipers, valves, brake and suspension systems and ECUs.



New range of Jaltest Tools products designed to supply the workshop with a high-quality professional equipment and consistent with the current digital technology of the commercial vehicle.

Combined with Jaltest, the leading multi-brand diagnostics tool, it will provide new business opportunities and a simple and guarantee service for the final client.

This union will facilitate the most advanced diagnostics tasks and maintenance of the vehicle, in a simple and intuitive way, not only at the software level, but also at manual and check tasks level.



**JALTEST ADAS CALIBRATION EQUIPMENT**  
Jaltest Tools launches onto the market, in a pioneer manner, the necessary equipment and accessories for the correct calibration of ADAS systems present in commercial vehicles, always accompanied by detailed information for their installation and operation.



**JALTEST PTE**  
Jaltest PTE is a mobile device designed to check the power supply and the signals that are transferred between the tractor head and the towed vehicle, such as lighting, indicator lamps, and CAN communication.



**JALTEST SST**  
Jaltest SST is a device designed to check the status of both passive and active speed sensors. In addition, it includes an option to simulate signals in order to verify the behaviour of the control unit.



**ELECTRONIC AND AUXILIARY EQUIPMENT**  
Jaltest Tools, based on its great Jaltest experience in workshop diagnostic equipment, has developed a wide variety of instruments to be used in a complementary and frequently manner in order to perform diagnostics and any subsequent action on the vehicle correctly.



**SPECIAL TOOL**  
Specific equipment necessary for maintenance and repair operations in essential components of the vehicle, such as gearbox or engine.



**PRECISION AND AUXILIARY TOOL**  
Mechanical tools for tasks requiring precision, such as torque wrenches, etc.



# ●jaltest

## ISOBUS CONTROL

JALTEST ISOBUS CONTROL offers electronic control solutions for implements, guaranteeing connectivity between the machine and the tractor regardless of the manufacturer. The purpose is to achieve the maximum performance of agricultural equipment in order to manage successfully and easily a productive and efficient business, adapted to new technologies and environmental demands.

Based on ISOBUS technology (ISO 11783), the main objectives of this solution are:

1. To ensure complete compatibility between tractor and implement regardless of the manufacturer.
2. Implement control from a single work screen.
3. Optimisation of time, resources and machines.
4. Automation of agricultural processes.
5. Maximisation of agricultural production and cost reduction.
6. Acquisition of efficient data to aid in the decision-making process and in future season planning.

ISOBUS is a standard communication protocol created by the main manufacturers of agricultural equipment that ensures compatibility between tractors and implements of different manufacturers, allowing the data exchange by means of a universal language and a single screen in the tractor cab.





**JALTEST TELEMATICS**

Jaltest Telematics defines a new concept in the market that improves any current solution by adding technical information obtained directly from the vehicles in real time.

Jaltest Telematics is aimed towards the optimization of fleet efficiency, by reducing the number of breakdowns, measuring the main indicators to support the decision-making process, and providing the necessary information to the users in each role.

1. Cloud Diagnostics.
2. Real time fleet health-check.
3. Breakdown time reduction.
4. ROI optimization.
5. Proactive Workshop.



TELEMATICS, CLOUD DIAGNOSTICS AND MACHINERY MANAGEMENT. A SOLUTION FOR EVERYTHING





 **LOCATION:**

Locate a machine or follow the transfer of the equipment for a period of time. Alarms of security limits, check the equipment working area.

 **CLOUD DIAGNOSTICS:**

Check the machine fault codes every time you use it. Stop the machine before the breakdown.

 **FLEET HEALTH CHECK:**

Monitors all your machines on a single screen.

 **TIMES:**

Idle times or working time. Compare uses between different equipment.

 **EFFICIENCY:**

Group machines and monitor the working coupling factor. Identify equipment below capacity.

 **MAINTENANCE:**

Create and manage workshop tasks. Reception and work order management.

 **FUEL:**

Control the daily fuel use from your fleet or workgroups. Send fuel trucks at the right time.





**OEM.**  
**SOLUTIONS**  
by cojali

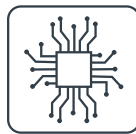
**OEM SOLUTIONS BY COJALI**

Cojali is not only a manufacturer for the independent after-market, but also an OEM-level solution provider.

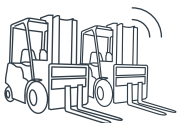
Thanks to a vast experience in the manufacturing of high-quality products, industry-leading and independent multibrand diagnostics and new technologies for fleet management, Cojali is a sure bet to provide solutions for leading vehicle and system manufacturers.



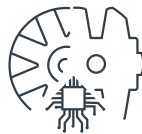
DIAGNOSTICS



ELECTRONICS



TELEMATICS

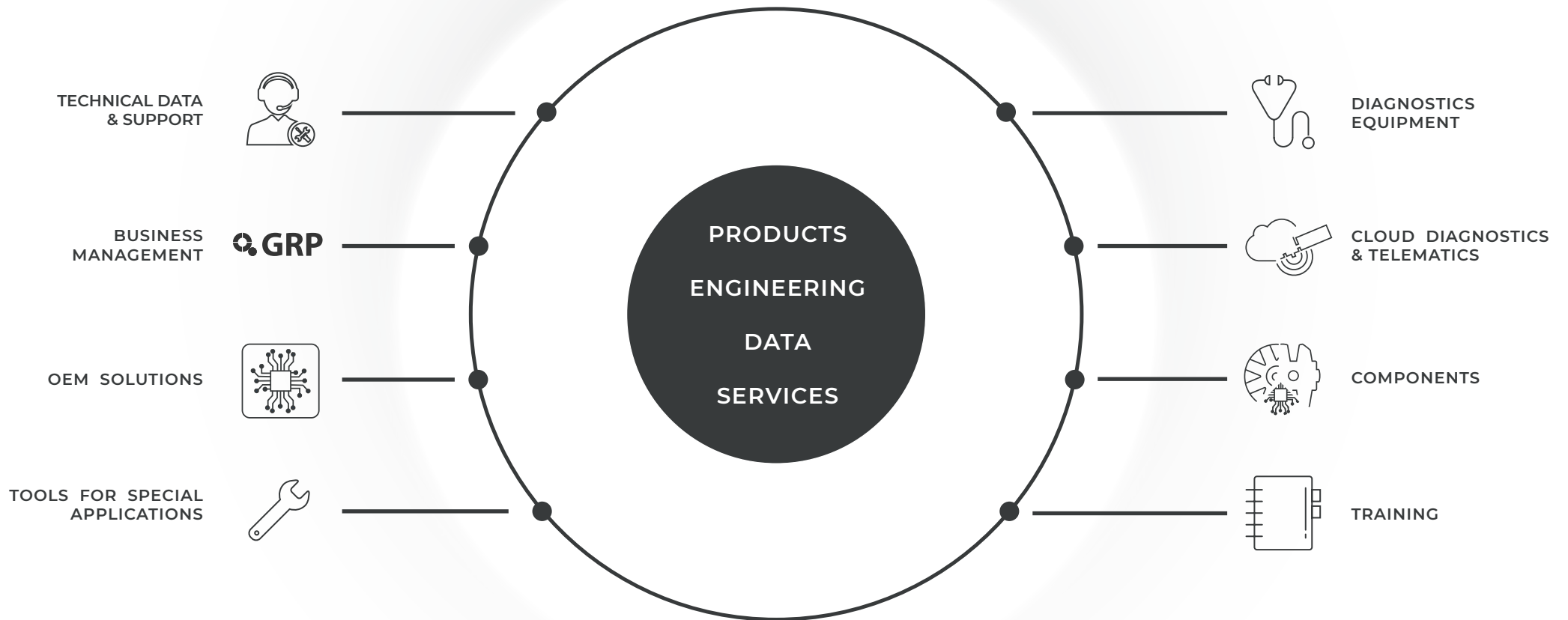


COMPONENTS

**TAILORED HARDWARE & SOFTWARE  
SOLUTIONS FOR MANUFACTURERS**



# COJALI. WE MEET ALL YOUR BUSINESS NEEDS





[cojaliusa.com](http://cojaliusa.com)

[jaltest.com](http://jaltest.com)



Cojali USA, Inc. · 2200 NW 102nd Avenue #4b · Doral, FL 33172, USA

[CLICK TO CONTACT US](#)

Tel.: +1 (305) 960-7651



Toll free: 1-800-975-1865



Mexico: +52-5546312236



[customersupport@jaltest.com](mailto:customersupport@jaltest.com)

[info@cojaliusa.com](mailto:info@cojaliusa.com)