

LOCKNFLATE®

AIR CHUCK

**Locks On—Stays On
Won't Leak!**

LOCKNFLATE® AIR CHUCK

*Depress the thumb lever and push onto the tire valve.
Release the lever to secure the air chuck and create
a leak free connection.*

FEATURES

- Durable, spring-loaded TPU seal
- Fits all standard Schrader valves (VG8/8V1 valve threads)
- Heavy-duty construction for strength and durability, resists corrosion

SUITABLE FOR USE ON

- Garage and industrial air line systems
- Auto and manual tire inflators
- Portable pressure gauges
- Constant pressure systems



HARDENED STEEL COLLET

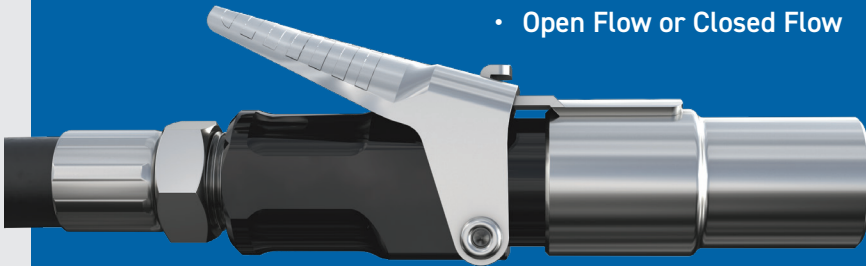
- Fits all standard Schrader valves (VG8/8V1 valve threads)

SLIDING SLEEVE

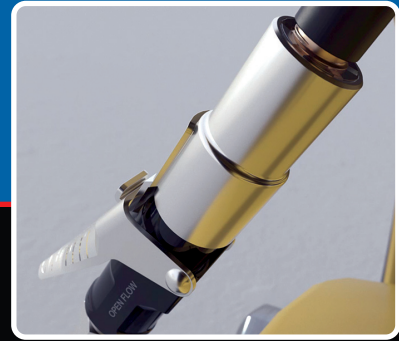
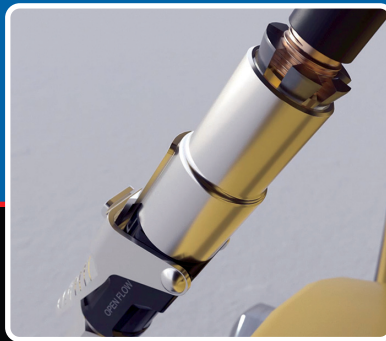
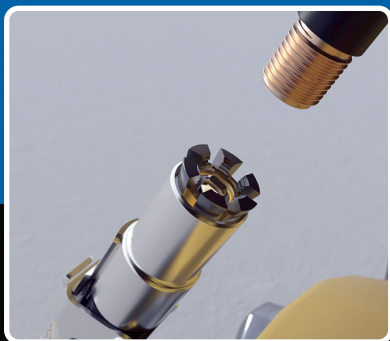
- Securely locks the air chuck onto the Schrader valve.

AVAILABLE IN 2 STYLES

- Open Flow or Closed Flow



DESCRIPTION	SPECIFICATION
Rated Pressure	150 psi (10 Bar)
Weight	2.6 oz (73 g)
Thread Types (Female)	1/4" NPT
Compatibility	Schrader tire valves (VG8/8V1 threads)
Product Dimensions	L 3.0" x W 0.79" x H 1.38" (L 77mm x W 20mm x H 35mm)
Front Diameter	0.63" (16mm)



**COAST LUBRICANTS
& INDUSTRIAL SUPPLY**

612 Chestnut Street, Nanaimo, BC, Canada V9S 2L2
Phone: 250-739-0960 Email: sales@coastlubricants.com Web: www.coastlubricants.com

sales@coastlubricants.com • 250-739-0960