



**COAST LUBRICANTS
& INDUSTRIAL SUPPLY**



Easylube[®]

EASYLUBE CATALOGUE

Contents

World Focus Overview.....	1
Easylube Lubricator Models.....	2
Easylube Lubricators.....	3
Easylube Fittings.....	4
Easylube Fittings continued.....	5
Easylube Gaurdwatch Software.....	6
Easylube Starter Kits.....	7
Easylube External Power Supply Adapter.....	8
Features & Benefits of Automatic Lubrication.....	9
Contact Us.....	11

World Focus Overview

Originally established in South Africa in January 2006 with our Canadian branch opened in January 2018, World Focus is an international leading provider of high-performance technology driven Lubrication systems. We are a solution driven company that takes pride in delivering specialized preventative maintenance plans, lubricants & industrial lubrication systems.

Our passion for finding solutions for each and every lubrication related challenge a customer can encounter has driven us to design unique systems and software based on individual customer needs.

During the past 12 years, we have established ourselves within the South African market servicing companies like Exxaro, Glencore, Thyssen Krupp and Sasol. Being exposed to the large mining operations in South Africa has prepared us to understand the extreme conditions under which mining machinery operates and refine our Lubrication Solutions. World Focus combined its years of experience in the lubrication industry with the latest technology to develop the state-of-the-art lubrication solutions which are targeted at optimizing all industrial operations. Starting with only two full time personnel in 2006 to being awarded the largest lubrication contract within the South African Mining Industry, we are thankful for the trust our clients have shown in our capabilities. Our vision of expanding into Canada with our products and services led to the establishment of World Focus Distribution Inc. Canada in January 2018.

Our Mission

To continuously challenge the status quo to find more efficient ways to optimize any industrial operation.

Our Vision

Our Vision has always been to optimize mining and manufacturing operations and offer a cost saving in the process.

About Easylube

The first generation of Easylube automatic lubricators were launched in the market in 1997, by 2005 Easylube had upgraded to the fifth generation and categorized into 3 models: Classic; Elite and RFID series. In 2009 RFID technology was a key focus to implement into the lubrication market. Up until now the Guardwatch software used to monitor and maintain the Easylube lubricators via an APP on your Smart phone or PDA device has evolved into a complete paperless lubrication maintenance program.

Each Easylube made is manually assembled by hand in Taiwan and supplied worldwide.

Our goal is constantly improving the quality of lubrication and simplifying the work involved with lubricating.

Easylube is the leader when it comes to being the most efficient lubrication management solution on the market.

Easytube Lubricator Models

Easytube Electro-mechanical Single Point Automatic Lubricators are available in 3 models:

1. Classic - Only 1 size: 150ml
2. Elite - Available in 3 Sizes = 60ml ; 150ml & 250ml
3. RFID - Available in 3 Sizes = 60ml ; 150ml & 250ml



150 Classic

Dispensing Grease Capacity: 150 ml



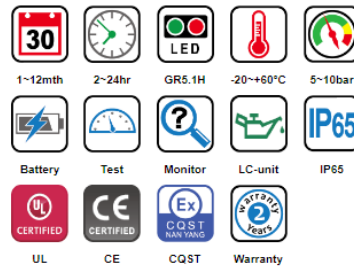
The Easytube Classic is only available in the 150ml size.

This unit has a red warning light that is activated when lubricator encounters any malfunctions or errors.



60 & 150 & 250 Elite

Dispensing Grease Capacity: 60 ml, 150 ml, 250 ml



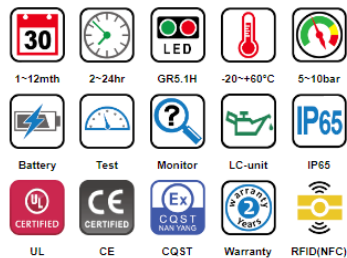
Easytube Elite (version 5) model is equipped with electromechanical gear set and Bicolor LED warning light.

Bicolor LED warning light provides information about bearing conditions for maintenance personnel through visual inspection.



60 & 150 & 250 RFID

Dispensing Grease Capacity: 60 ml, 150 ml, 250 ml



With RFID technology, the information of bearing can be obtained immediately and accurately during routine inspection.

Easytube RFID model is equipped with an electromechanical gear set, RFID tag to enable real time tracking.

Red warning light flashes intelligently to notify that the back pressure of the equipment is abnormal or the cartridge is empty.

Easylube Lubricator

A fully assembled Easylube consists of **two Stock Codes**:

1. Drive Unit & Protective Cover (ONLY)
2. Cup & Battery - Refill kit (ONLY)



DRIVE UNIT &
PROTECTIVE COVER
EXAMPLE: **170 RFID**

CUP & BATTERY
REFILL KIT
EXAMPLE: **170 RFID CB**

Easylube Cups have an option of being supplied empty or pre-filled with a specific grease specification.



DIP Switches to easily set your Easylube on the correct Month Setting.

Easily removable cap to insert and remove battery.



EASYLUBE DRIVE UNIT & PROTECTIVE COVER

STOCK CODE	DESCRIPTION
60 RFID	60 ML RFID DRIVE UNIT & PROTECTIVE COVER
60 ELITE	60 ML ELITE DRIVE UNIT & PROTECTIVE COVER
170 RFID	150 ML RFID DRIVE UNIT & PROTECTIVE COVER
170 ELITE	150 ML ELITE DRIVE UNIT & PROTECTIVE COVER
170 CLASSIC	150 ML CLASSIC DRIVE UNIT & PROTECTIVE COVER
250 RFID	250 ML RFID DRIVE UNIT & PROTECTIVE COVER
250 RFID	250 ML ELITE DRIVE UNIT & PROTECTIVE COVER



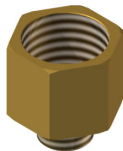
EASYLUBE CUP & BATTERY - REPLACEMENT KIT (EMPTY)

STOCK CODE	DESCRIPTION
60 RFID	60 ML RFID DRIVE UNIT & PROTECTIVE COVER
60 ELITE	60 ML ELITE DRIVE UNIT & PROTECTIVE COVER
170 RFID	150 ML RFID DRIVE UNIT & PROTECTIVE COVER

Easylube Fittings



MM-121



P-4025



FF-101

Easylube has a comprehensive range of mounting fittings for quick and hassle free installation.

Generating a maximum pressure of 10-bar, Easylube can either be Directly mounted to a lubrication point or Remotely mounted up to 4 meters away from the lube point.

Direct Mount

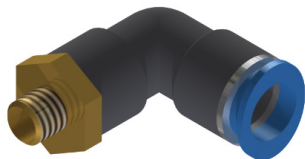
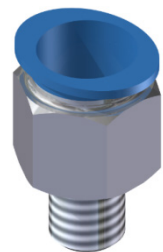
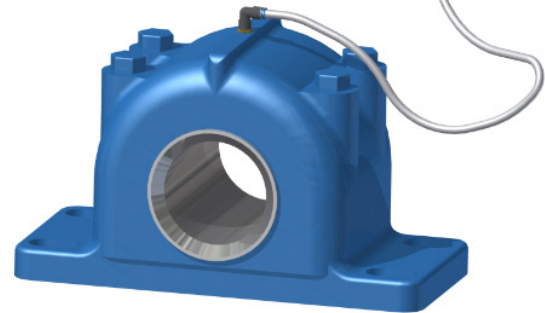
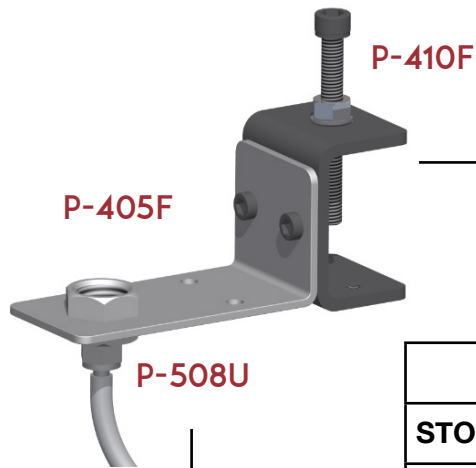
Direct Mount refers to an Easylube Lubricator being directly fitted to the lubrication point. This is achieved by directly attaching the Lubricator to the lube point with an adapter fitting. The grease nipple is removed and replaced with the adapter fitting which the lubricator attaches to.

EASYLUBE DIRECT MOUNT FITTINGS

STOCK CODE	DESCRIPTION
MM-111	EXTENSION PIPE, 1/8" (MM) X 29MM (L) + FF-101
MM-121	EXTENSION PIPE, 1/8" (MM) X 58MM (L) + FF-101
MM-131	EXTENSION PIPE, 1/8" (MM) X 89MM (L) + FF-101
FF-101	1/8" (F) X 1/8" (F) UNION
P-104S	1/8 (M) X 8MM (F) STRAIGHT
P-105S	1/8" (F) X 3/8" (M) STRAIGHT
P-106S	1/8" (F) X 6MM (M) STRAIGHT
P-107S	1/4" (F) X 3/8" (M) STRAIGHT
P-108S	1/4" (F) X 8MM (M) STRAIGHT
P-408S	1/2" (F) X 8MM (M) STRAIGHT
P-108A	1/2" (F) X 8MM (M) 45 DEGREE
P-201S	1/4" (F) X 1/8" (M) STRAIGHT
P-401A	1/2" (F) X 1/8" (M) 45 DEGREE
P-401S	1/2" (F) X 1/8" (M) STRAIGHT
P-402A	1/2" (F) X 1/4" (M) 45 DEGREE
P-402S	1/2" (F) X 1/4" (M) STRAIGHT

Easylube Fittings Continued

Remote Mount refers to an Easylube Lubricator being remotely fitted to the lubrication point. This is achieved by directly attaching a PU tube to the lube point via an adapter fitting. The lubricator is then connected to a specially designed mounting bracket which connects the lubricator to the PU tube. The grease nipple is removed and replaced with the adapter fitting which the PU tube connects to. There is also a special mounting clip that allows you to mount the lubricator bracket to any structure without any drilling or modifications.



EASYLUBE DIRECT MOUNT FITTINGS	
STOCK CODE	DESCRIPTION
P-405F	SINGLE MOUNTING BRACKET
P-406F	2 IN 1 MOUNTING BRACKET
P-407F	3 IN 1 MOUNTING BRACKET
P-408F	4 IN 1 MOUNTING BRACKET
P-409F	5 IN 1 MOUNTING BRACKET
P-410F	MOUNTING CLIP
P-506MSP	8MM PU X 6MM (M) STRAIGHT
P-507MSP	8MM PU X 8MM (M) STRAIGHT
P-501USP	8MM PU X 1/8" (M) STRAIGHT
P-502USP	8MM PU X 1/4" (M) STRAIGHT
P-503USP	8MM PU X 3/8" (M) STRAIGHT
P-591USP	8MM PU X 1/8" (M) 90 DEG ANGLE CONNECTOR
P-592USP	8MM PU X 1/4" (M) 90 DEG ANGLE CONNECTOR
P-508U	PU TUBE 5 X 8MM PER METER LENGTH
EASY-REMOTE-KIT	REMOTE MOUNTING KIT

The Easylube Remote Mounting Kit comes complete with a Single Mounting Bracket, Mounting Clip, 2 meters of PU tube & adapter Fittings

Easylube Guardwatch Software

Easylube RFID Guardwatch system can help you to simplify your lubrication maintenance requirements.

With the help of AI software, you can monitor the state of each lubrication point and monitor the patrol mission progress of each technician easily.

In addition, Guardwatch provides graphical user interface to intelligently guide a technician to perform patrol missions step by step.

Even if the mission is assigned to inexperienced technicians, they can still perform the lubrication maintenance. Moreover, the routine inspection can be carried out easily and correctly.

At the same time, the lubrication status of each bearing can be monitored remotely, and it can be seen whether or not patrol missions have been completed.

Thus, the goal of preventive maintenance is implemented.



GUARDWATCH

	Install Easylube® RFID Lubricators. The Right Lubricant With the Right method.		Collect and Register Lubrication Point Information by Easylube® App
	Output and Analyze Maintenance Records from TPMS		Calculate Minimum Quantity Lubrication (MQL) by TPMS. In the Right Volume, At the right Interval
	Send Mission Reports Back via USB Cable or Wireless Link		Monitor States of Lubrication (MQL) by TPMS
	Follow the Intelligent Direction of Gaurdwatch to Complete the Missions		Assign Patrol Missions from TPMS to Gaurdwatch via USB Cable or Wireless Link



EASYLUBE SOFTWARE	
STOCK CODE	DESCRIPTION
GUARDWATCH	GUARDWATCH SOFTWARE DISC & 2 USB LOCKS
RFPVC	RFID TAG SINGLE (CARD TYPE)
RFPVD	RFID TAG SINGLE (3M DISC TYPE)
RFPVT	RFID TAG SINGLE (CABLE TIE TYPE)

Easylube Starter Kits

The Easylube Starter Kit is an all in one package to get you lubricating automatically instantly. Each kit comes complete with an additional cup and battery for each of the 2x Drive units in the kit. There are typically two types of kits, the Direct Mount Kit to directly mount your Easylube to the lube point and the Remote Mount Kit to mount your Easylube up to a maximum distance of 4 meters away from the lube point.



The **Direct Mount Kit** comes complete with:

- 2x Easylube Drive Units & Protective Covers
- 4x Cups
- 4x Batteries
- 6x Direct Mount Fittings



The **Remote Mount Kit** comes complete with:

- 2x Easylube Drive Units & Protective Covers
- 4x Cups
- 4x Batteries
- 2 meters PU tube | 2x Mounting Brackets
- 4x Mounting Fittings | 2x Mounting Clips



EASYLUBE STARTER KIT - DIRECT MOUNT

STOCK CODE	DESCRIPTION
ER-150C-000A	CLASSIC STARTER KIT 150ML DIRECT MOUNT
ER-150C-000A	ELITE STARTER KIT 60ML DIRECT MOUNT
ER-150C-000A	ELITE STARTER KIT 150ML DIRECT MOUNT
ER-150C-000A	ELITE STARTER KIT 250ML DIRECT MOUNT
ER-150C-000A	RFID STARTER KIT 60ML DIRECT MOUNT
ER-150C-000A	RFID STARTER KIT 150ML DIRECT MOUNT
ER-150C-000A	RFID STARTER KIT 250ML DIRECT MOUNT



EASYLUBE STARTER KIT - REMOTE MOUNT

STOCK CODE	DESCRIPTION
ER-150C-000B	CLASSIC STARTER KIT 150ML REMOTE MOUNT
ER-150C-000B	ELITE STARTER KIT 60ML REMOTE MOUNT
ER-150C-000B	ELITE STARTER KIT 150ML REMOTE MOUNT
ER-150C-000B	ELITE STARTER KIT 250ML REMOTE MOUNT
ER-150C-000B	RFID STARTER KIT 60ML REMOTE MOUNT
ER-150C-000B	RFID STARTER KIT 150ML REMOTE MOUNT
ER-150C-000B	RFID STARTER KIT 250ML REMOTE MOUNT

Easylube External Power Supply Adapter

The Easylube external power supply adapter is a focus towards a batteryless power driven lubricator need. Adapters can be simply put onto the drive unit to replace lithium batteries. Operating Temperatures -30°C - 80°C

Currently only available with the following Easylube Models:

- 170 CLASSIC
- 170 ELITE
- 170 RFID

250 Model range available soon...

Supply Voltage: DC 10V - 36 V
 Output Voltage: DC 5.7 V
 IP Rating: IP65
 Cord Length: 1 meter

NOTE: The Easylube adapter is for use with a DC supply. If you only have an AC supply, please use an AC adapter before using the Easylube adapter

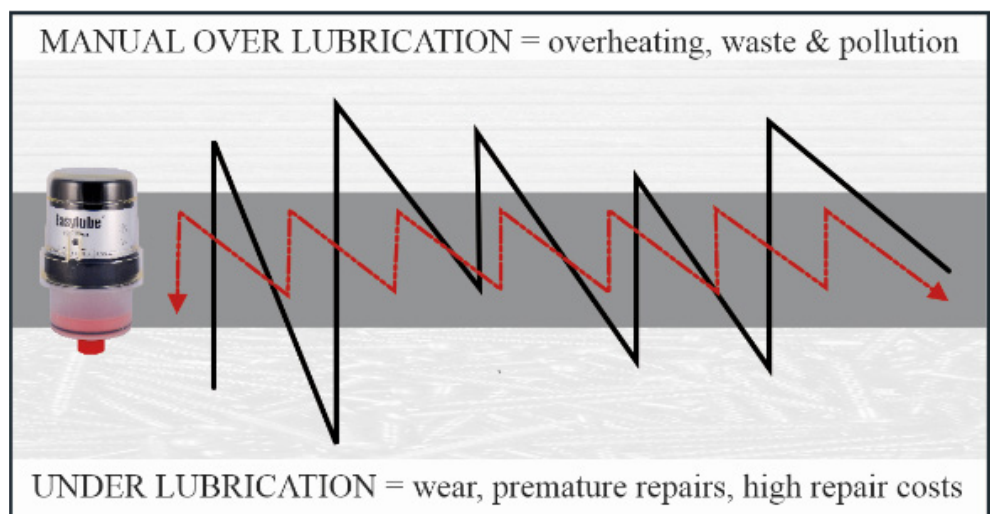


EASYLUBE POWER SUPPLY ADAPTER	
STOCK CODE	DESCRIPTION
P-606S	150ML POWER SUPPLY ADAPTER DC 10V - 36V

Features & Benefits of Automatic Lubrication

Automatic Lubrication Systems provide consistent lubrication on a more frequent basis. Too little or too much lubricant will result in friction and heat, creating drag on the bearing and damaging the bearing's seals. Furthermore, the best time to lubricate a bearing is while equipment is moving. So what makes automatic lubrication methods better?

- **Reduces Repairs** by increasing bearing life
- **Prevents Waste of Lubricant** by dispensing precise amounts
- **Reduces man-hours** by eliminating manual lubrication
- **Eliminates Machine Downtime** thereby increasing production
- **Eliminates Product Spoilage** by controlling amount of lubricant to the bearing
- **Reduces Energy** requirements by increasing machine efficiency (lowers bearing friction)
- **Safety** No climbing on or over the machinery
- **Better Housekeeping** eliminates spillage/machines remain cleaner and safer
- **Promotes More Efficient Lubrication**
 - A) Lubricates while machine is running
 - B) Delivers the right lubricant, in the right amount, at the right time
- **Eliminates Bearing Contamination** by supplying lubricant from a closed circuit.
Most Technicians do not clean grease fittings before manually lubricating them
- **Dispenses the right amount** of lubricant at the right time
- Bottom Line **Automatic Lubrication reduces manufacturing** costs allowing companies to increase profits and remain competitive in the marketplace
- **Environmentally** better as there is a significant reduction in grease wastage and spillage



612 Chestnut Street, Nanaimo, BC, Canada V9S 2L2
Phone: 250-739-0960 Email: sales@coastlubricants.com Web: www.coastlubricants.com